

## INSTALLATION INSTRUCTIONS

DESCRIPTION: Fender Eliminator Kit

PART # 1WD-F16E0-V0

MODEL: '15~ YZF-R3



### WARNING

Please read and understand these instructions completely before installation to avoid possible injury to yourself, or damage to the accessory or vehicle.

### NOTICE:

This installation requires a torque wrench and the service manual for this model. It should be performed by an authorized Yamaha dealer or other qualified technician.

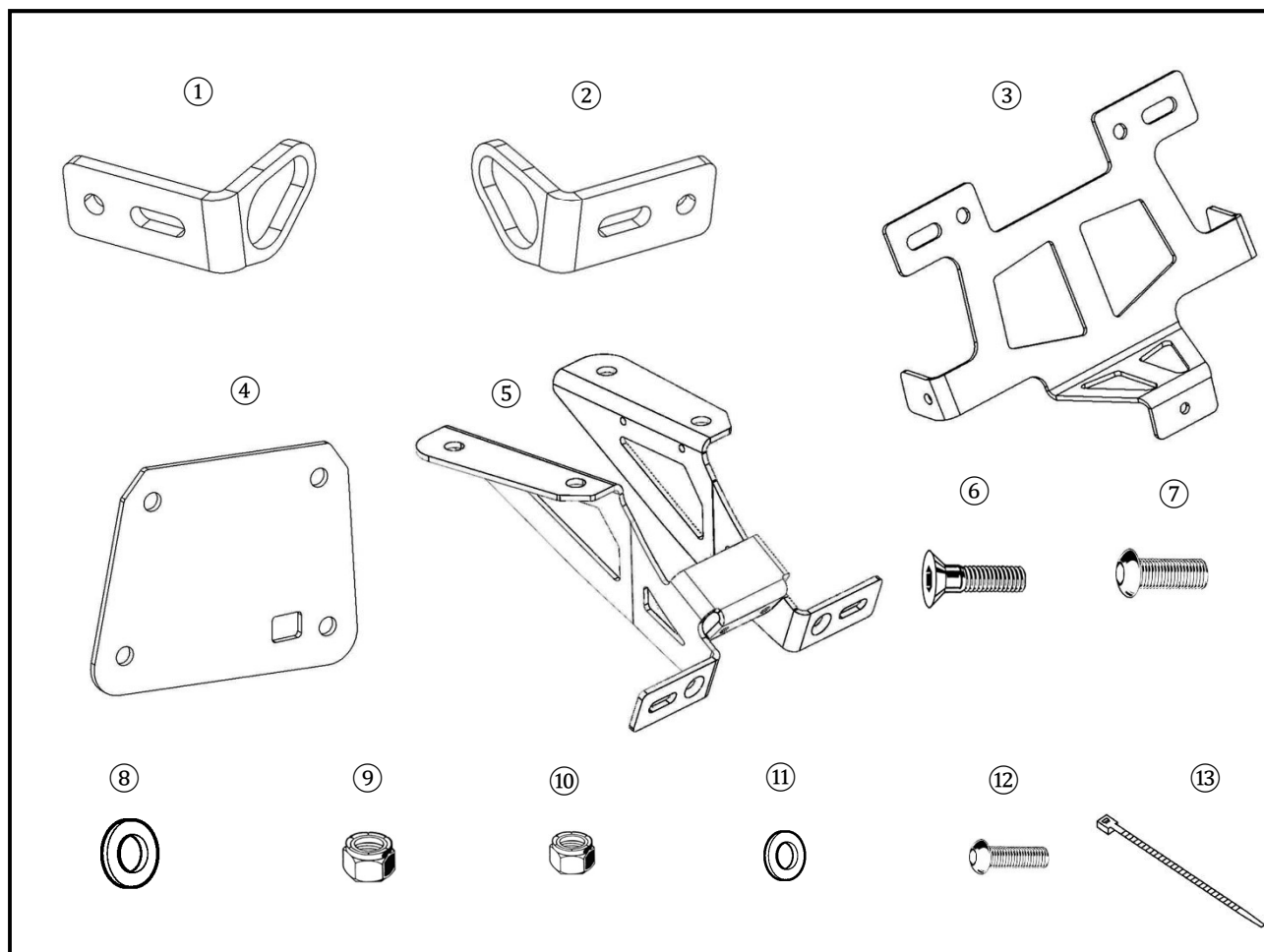
### WARRANTY INFORMATION:

Genuine Yamaha accessories are covered by a one-year limited warranty against defects in material or workmanship. Labor for replacement of defective components is not covered. See your Yamaha dealer for a copy of the warranty statement.

### DEALER OR INSTALLER:

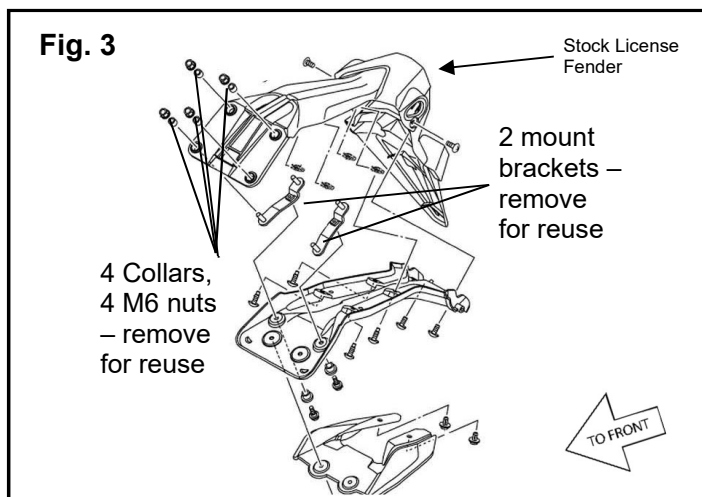
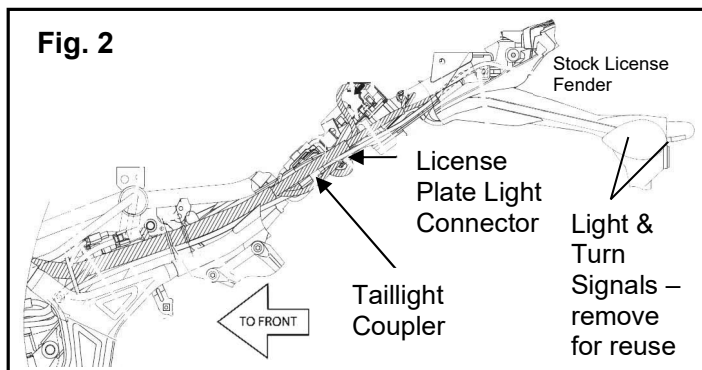
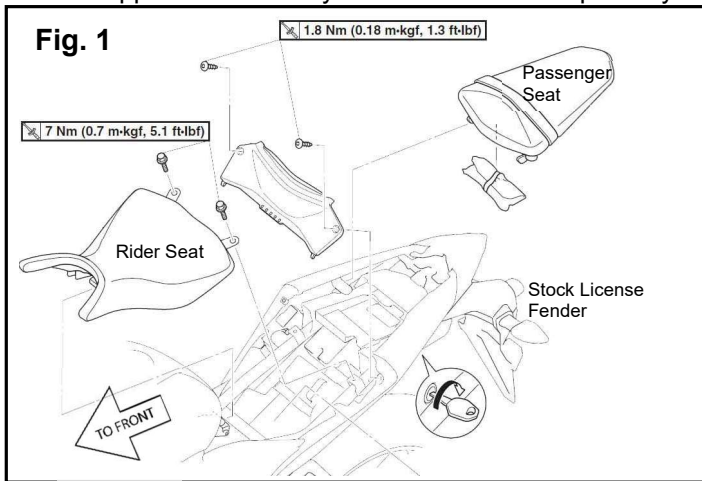
These instructions contain important information for future reference and *must* be given to the customer.

### PARTS LIST:



No.	Part Number	Description	Qty
--	1WD-F16E0-V0	Fender Eliminator Kit	--
①	*	Left Side Turn Signal Bracket	1
②	*	Right Side Turn Signal Bracket	1
③	*	Reflector Bracket	1
④	*	Mud Guard	1
⑤	*	Main Bracket	1
⑥	*	M6 x 20 Flat Head Screw	2
⑦	*	M6 x 25 Button Head Bolt	2
⑧	*	M6 Washer	6
⑨	*	M6 Nyloc Nut	4
⑩	*	M5 Nyloc Nut	2
⑪	*	M5 Washer	2
⑫	*	M5 x 16mm Button Head Screw	2
⑬	*	Cable Tie	3

\* Part supplied with kit only and not available separately.



### PREPARATION:

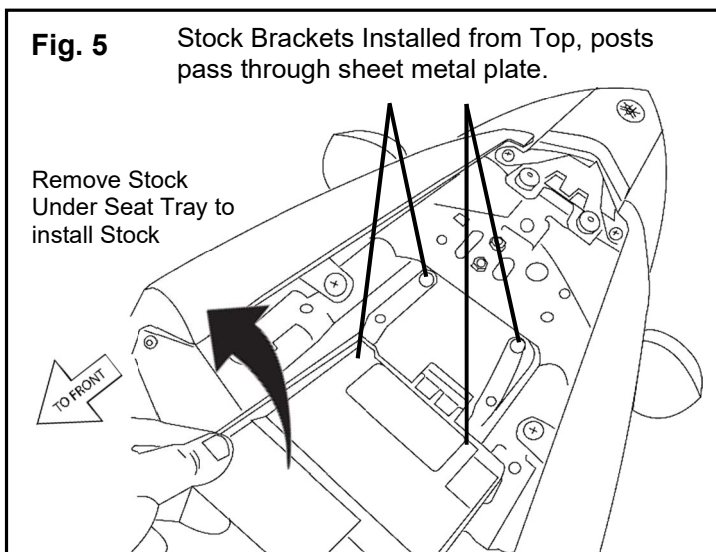
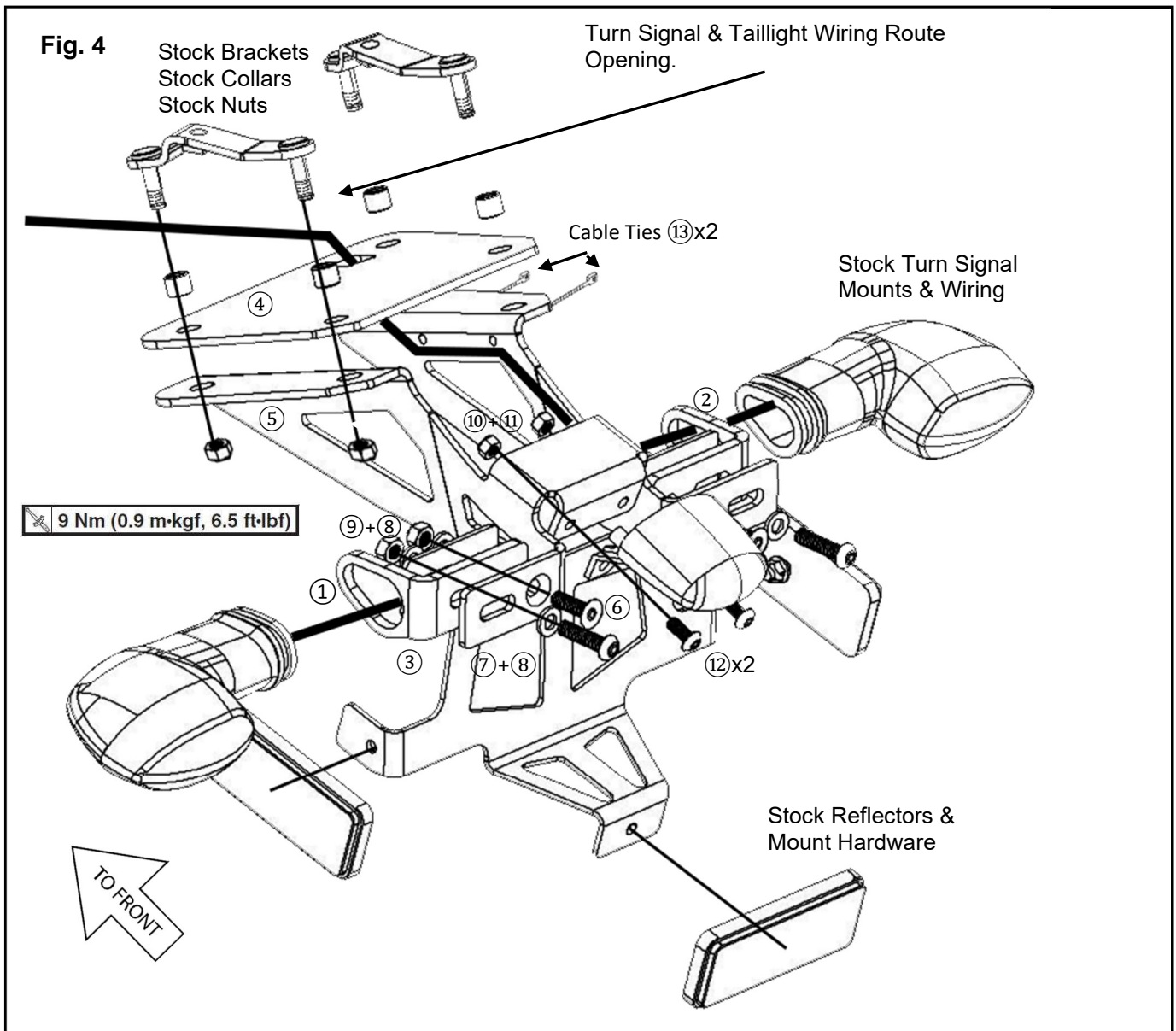
- Stand the motorcycle on a secure level surface.
- Clean mount surfaces before starting the install.

### INSTALLATION:

1. Remove rider and passenger seats. (Fig. 1)
2. Disconnect turn signals and license plate light (Fig. 2)
3. Remove Stock Rear License Fender. (Fig. 3)
4. Remove and retain 2x mounting brackets (with M6 studs), 4x M6 nuts, turn signals, reflector, stock light and 4x collars from main stock fender. (Fig. 4)

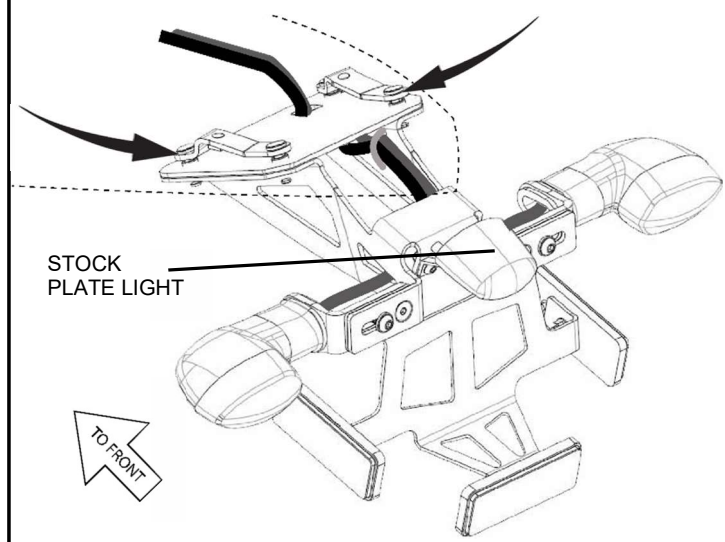
**Note:** Install the ④ Mud Guard so that the rectangular hole is on the right side. Ensure collars fit flush with the ④ Mud Guard.

5. Install stock license plate light with ⑫ M5 x16mm Button Head Bolt, ⑪ M5 washer, and ⑩ M5 Nyloc nut.
6. Assemble ③ Reflector Bracket, ① and ② Turn Signal Mounts and ⑤ Main Bracket with ⑥ M6 x 20 Flat Head Screw, ⑧ M6 Washer, and ⑨ M6 Nyloc Nut. Align the slots and tighten.
7. Install stock turn signals to the Left and Right Turn Signal brackets (① and ②). The wiring passes through the center of the brackets.
8. Install the four stock Collars into ⑤ Main Bracket. (Fig. 3)
9. Route the rear turn signal light leads, license plate light lead, and Yamaha diagnostic tool coupler lead through the opening in the Mud Guard as shown in Fig. 4. Ensure wiring is not pinched during assembly. Place the ④ Mud Guard over the stock collars.
10. Position the assembly under the seat, align the holes in the assembly with the mount holes in the sheet metal, and pass the threaded ends of the Stock Brackets through the sheet metal plate, ④ Mud Guard, and ⑤ Main Bracket (see Fig.4 and Fig. 5). Loosely tighten the four nuts that secure the assembly to the motorcycle.



11. Install (13) Cable Ties to secure the wiring bundle as shown in Fig. 4 and leave loose.
12. Adjust wiring and position slack inside the tail section before tightening the cable ties.
13. Torque the nuts that secure and position the main bracket. Torque the 4 stock nuts that secure the stock brackets to the (5) Main Bracket to 9 Nm (0.9 m·kg or 6.5 ft·lb).
14. Connect electrical connections that were disconnected in step 2.
15. Reinstall stock under seat tray (see Fig. 5)
16. Use (7) M6x25mm button head screws + (8) M6 Washers + (9) M6 Nyloc Nuts to attach license plate.
17. Install 3 stock reflectors to the (5) Main Bracket with stock screw mounts and bolts – See Fig. 6.
18. Verify turn signals and light operate properly.
19. Install the rider and passenger seat.

**Fig. 6** Assembly Attached to Motorcycle by pressing threaded posts on mount brackets through holes in rear seat plate.



**MAINTENANCE:**

Periodically check all hardware for tightness and re-torque as necessary.

**CARE AND CLEANING:**

Wash using a mild soap and water solution and soft cloth.

**CUSTOMER SERVICE:**

For further information see your Yamaha dealer.

**ESTIMATED TIME TO INSTALL: 0.7 HRS**